

■ Main boom rated lifting loads (78ton counterweight, 16ton weight for body)

(Unit:metric ton)

Boom length (m) Working radius (m)	18.0	21.0	24.0	27.0	30.0	33.0	36.0	39.0	42.0	45.0	48.0	51.0	54.0	57.0	60.0
5.0	5.0m x 200.0	5.6m x 165.0													
6.0	181.0	165.0	6.1m x 150.0	6.6m x 140.0											
7.0	161.9	154.3	146.7	139.1	7.2m x 130.0	7.7m x 118.0									
8.0	136.0	133.5	131.1	128.6	126.1	118.0	8.2m x 108.0	8.7m x 100.0							
9.0	116.6	115.6	114.6	113.6	112.6	108.5	104.4	100.0	9.2m x 94.0	9.8m x 89.0					
10.0	101.3	100.9	100.5	100.0	99.6	97.5	95.4	93.3	91.2	89.0	10.3m x 80.0	10.8m x 75.0	11.3m x 72.0	11.9m x 68.0	
12.0	78.7	78.6	78.5	78.3	78.2	77.5	76.7	76.0	75.2	74.5	72.8	71.1	69.3	67.6	12.4m x 62.0
14.0	62.0	61.8	61.5	61.3	61.0	60.9	60.8	60.7	60.6	60.5	60.1	59.7	59.3	58.9	58.5
16.0	51.0	50.9	50.8	50.6	50.5	50.4	50.3	50.2	50.1	50.0	49.9	49.8	49.7	49.6	49.5
18.0	17.2m x 46.4	43.3	43.2	43.0	42.9	42.8	42.7	42.7	42.6	42.5	42.4	42.3	42.2	42.1	42.0
20.0		19.8m x 38.4	37.8	37.6	37.5	37.4	37.3	37.1	37.0	36.9	36.8	36.7	36.6	36.5	36.4
22.0			33.4	33.1	32.7	32.6	32.5	32.4	32.3	32.2	32.1	32.0	31.8	31.7	31.6
24.0			22.4m x 32.7	29.5	29.2	29.1	29.0	28.9	28.8	28.7	28.6	28.5	28.3	28.2	28.1
26.0				25.0m x 28.0	26.4	26.3	26.2	26.0	25.9	25.8	25.7	25.5	25.4	25.2	25.1
28.0				27.6m x 24.5	23.9	23.7	23.6	23.4	23.3	23.1	23.0	22.8	22.7	22.5	
30.0					21.8	21.7	21.5	21.4	21.2	21.0	20.9	20.7	20.6	20.4	
32.0					30.2m x 21.7	19.9	19.7	19.6	19.5	19.3	19.1	19.0	18.8	18.6	
34.0						32.8m x 19.2	18.1	18.0	17.9	17.7	17.5	17.4	17.2	17.0	
36.0							35.4m x 17.1	16.6	16.5	16.3	16.1	16.0	15.8	15.6	
38.0								38.0m x 15.4	15.3	15.1	14.9	14.7	14.5	14.3	
40.0									14.3	14.1	13.9	13.6	13.4	13.2	
42.0									40.6m x 14.0	13.1	12.9	12.6	12.4	12.2	
44.0										43.2m x 12.5	11.9	11.7	11.5	11.3	
46.0											45.8m x 11.2	10.9	10.7	10.5	
48.0												10.2	10.0	9.8	
50.0												48.4m x 10.0	9.3	9.1	
52.0													51.0m x 8.9	8.4	
54.0														53.6m x 8.0	

Boom length (m) Working radius (m)	63.0	66.0	69.0	72.0	75.0	78.0	81.0	84.0	87.0	90.0
12.0	12.9m x 56.0	13.4m x 50.0	13.9m x 47.0							
14.0	54.2	48.1	47.0	14.5m x 42.0	15.0m x 37.5	15.5m x 34.0				
16.0	47.1	44.1	43.3	41.8	37.5	34.0	16.0m x 30.5	16.5m x 28.0	17.0m x 25.0	17.5m x 23.0
18.0	41.2	40.2	40.1	38.0	35.6	33.3	30.5	27.0	25.0	22.6
20.0	36.3	35.9	35.7	35.6	33.4	30.4	28.5	25.7	23.5	20.6
22.0	31.5	31.4	31.3	31.2	31.1	28.5	26.4	24.5	21.8	19.0
24.0	28.0	27.8	27.7	27.6	27.5	27.3	25.0	22.7	20.3	18.0
26.0	25.0	24.8	24.5	24.3	24.0	23.8	23.5	21.2	19.1	16.8
28.0	22.4	22.2	22.0	21.9	21.8	21.6	21.5	19.8	17.8	15.6
30.0	20.3	20.1	19.9	19.8	19.7	19.6	19.5	18.6	16.7	14.5
32.0	18.4	18.2	18.0	17.9	17.8	17.7	17.6	17.5	15.7	13.6
34.0	16.8	16.6	16.4	16.3	16.2	16.1	16.0	15.8	14.7	12.8
36.0	15.4	15.2	15.0	14.9	14.8	14.6	14.5	14.3	13.9	12.0
38.0	14.1	13.9	13.7	13.6	13.5	13.4	13.3	13.0	12.8	11.3
40.0	13.0	12.8	12.6	12.5	12.4	12.3	12.2	11.9	11.7	10.6
42.0	12.0	11.8	11.6	11.5	11.4	11.3	11.2	10.8	10.6	10.1
44.0	11.1	10.9	10.7	10.6	10.5	10.4	10.3	9.8	9.6	9.2
46.0	10.3	10.1	9.9	9.8	9.7	9.5	9.4	8.9	8.6	8.3
48.0	9.6	9.4	9.1	8.9	8.8	8.6	8.4	8.0	7.8	7.4
50.0	8.9	8.7	8.5	8.4	8.2	8.1	7.9	7.4	7.0	6.7
52.0	8.3	8.1	7.8	7.7	7.5	7.4	7.2	6.8	6.3	6.0
54.0	7.7	7.5	7.3	7.2	7.0	6.9	6.7	6.2	5.7	5.4
56.0	7.2	7.0	6.8	6.6	6.5	6.3	6.1	5.7	5.2	4.8
58.0	56.2m x 7.1	6.5	6.3	6.1	6.0	5.8	5.6	5.2	4.6	4.2
60.0		58.8m x 6.3	5.8	5.6	5.5	5.3	5.1	4.7	4.2	3.6
62.0			61.4m x 5.5	5.2	5.0	4.8	4.6	4.3	3.6	3.1
64.0				64.0m x 4.8	4.6	4.4	4.2	3.8	3.2	2.7
66.0					4.2	4.0	3.8	3.4	2.7	2.3
68.0					66.2m x 4.0	3.2	3.0	2.5	2.3	2.0
70.0							2.5	2.0		

Notes

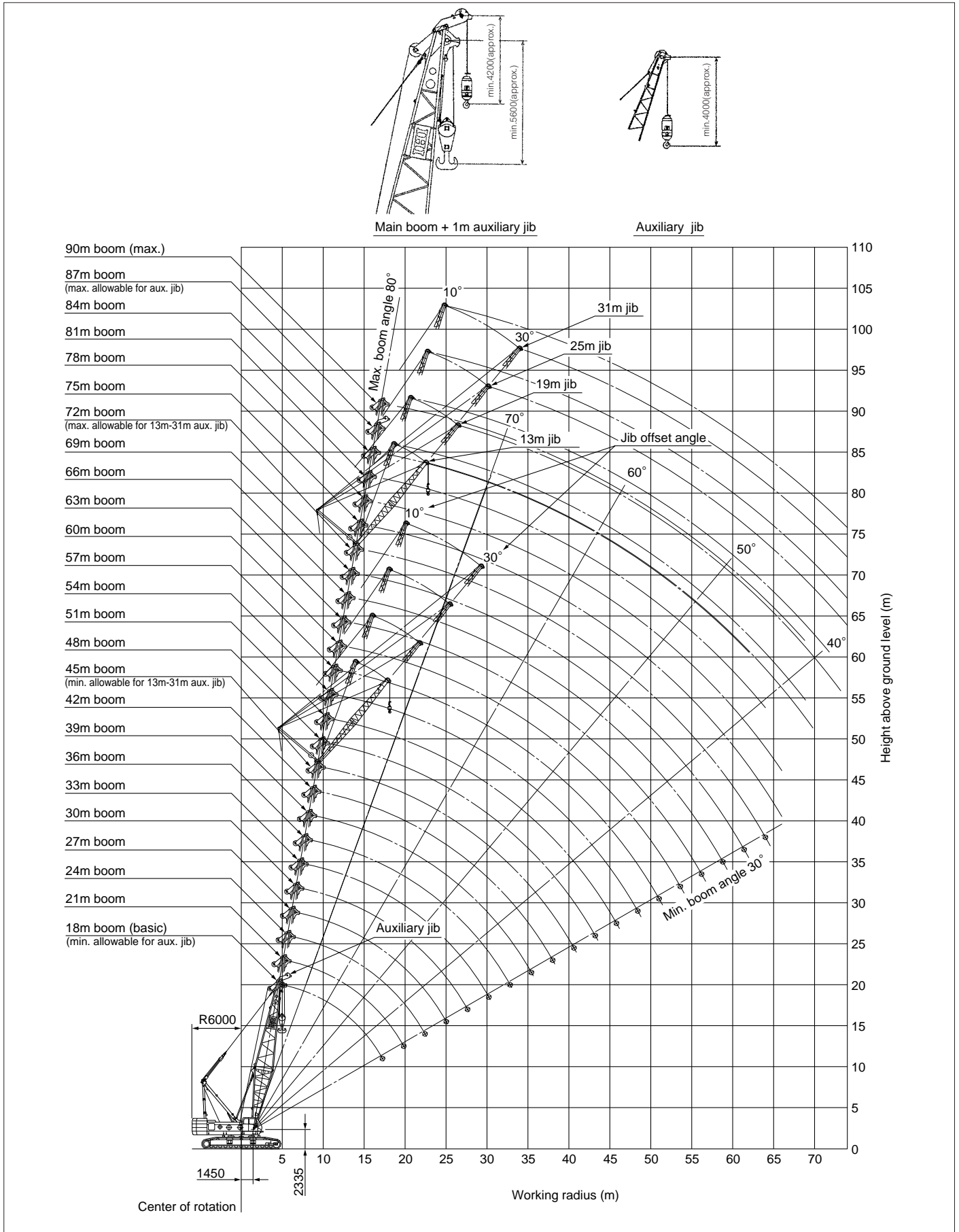
- Above rated loads are based on the machine being operated on firm level ground, within 78% of tipping load at any point of 360° around the machine with forward stability factor of over 1.15.
- Working radius is horizontal distance from center of rotation to a vertical line through the center of gravity of the load.
- The weight of the slings, hook block(s) and auxiliary lifting devices must be considered to be a part of the load.
Hook block weight:
200ton hook block...2.70ton 150ton hook block...2.40ton
100ton hook block...1.40ton 60ton hook block...1.20ton
50ton hook block...1.00ton 30ton hook block...1.00ton
13.5ton hook block...0.60ton
- Jib boom can be fitted to main boom in the following combinations.

Jib length(m)	Auxiliary	13.0	19.0	25.0	31.0
Boom length(m)	18.0~87.0	45.0~72.0	45.0~72.0	45.0~72.0	45.0~72.0
- When jib boom is fitted actual loads that can be lifted with main hook block should be reduced according to the below table (the weights include auxiliary hook block).

Jib length(m)	Auxiliary	13.0	19.0	25.0	31.0
Weight to be deducted(ton)	0.8	3.5	4.0	4.9	6.0
- High "A" Frame should be extended before working.
Extend the "A" frame to the highest position when there is no mast.
Extend the "A" frame to the mid-position when there is a mast.
- Depending on the number of part lines, rated lifting load is limited as follows:

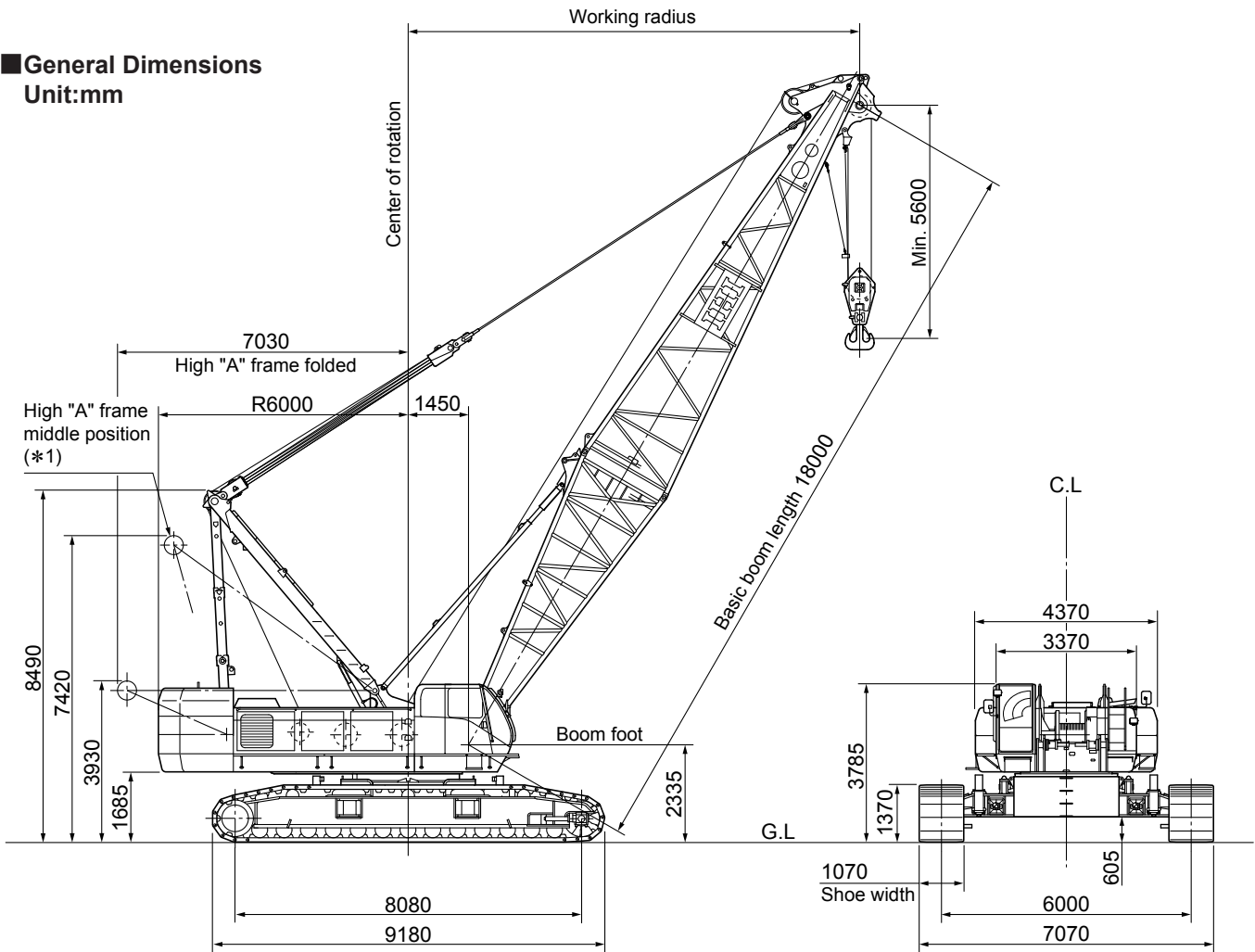
1Part line...up to 13.5ton	2Part line...up to 25.0ton
3Part line...up to 37.5ton	4Part line...up to 50.0ton
5Part line...up to 62.5ton	6Part line...up to 75.0ton
7Part line...up to 87.5ton	8Part line...up to 100.0ton
9Part line...up to 112.5ton	10Part line...up to 125.0ton
11Part line...up to 137.5ton	12Part line...up to 150.0ton
13Part line...up to 162.5ton	14Part line...up to 175.0ton
15Part line...up to 187.5ton	16Part line...up to 200.0ton
- Always use a mast for boom length of 69m or over. Carefully follow the instruction manual concerning installation of pendant rope.
- Rated loads shown in bold lines are based on structural strength factors.

Working range (No load condition)



General Dimensions

Unit:mm



Specifications

Performance	
Swing speed	1.7min ⁻¹ (1.7rpm) [Constant swing speed 0.6min ⁻¹ (0.6rpm)---optional]
Travel speed	※0.9/0.6 km/h
Gradability	30% (16.7°)
Engine	
Make	HINO MOTOR
Model	K13C-UV (with turbo) Diesel engine
Type	4-cycle, water cooled, straight 6-cylinder, direct injection
Rated output	275kw/2000min ⁻¹ (374PS/2000rpm)
Total piston displacement	12.882L
Fuel tank capacity	450L
Battery	DC12V x 150AH x 2pcs.
Main hoist system (Front left axle, also used for hoisting tower jib)	
Hydraulic motor	Variable displacement axial piston type
Reduction gear	Two-stage planetary gear
Hoist drum	Single drum driven independently by hydraulic motor, lebus grooved drum
Clutch	Internal expanding band type
Brake	External contracting band type
Drum lock	Ratchet lock
Aux. hoist system (Rear left axle)	
Hydraulic motor	Variable displacement axial piston type
Reduction gear	Two-stage planetary gear
Hoist drum	Single drum driven independently by hydraulic motor, lebus grooved drum
Clutch	Internal expanding band type
Brake	External contracting band type
Drum lock	Ratchet lock
Boom hoist system (Rear right axle, also used for hoisting tower post)	
Hydraulic motor	Variable displacement axial piston type
Reduction gear	Three-stage planetary gear
Hoist drum	Dual drums driven independently by hydraulic motor, lebus grooved drum
Brake	Wet type multi-disk
Drum lock	Ratchet lock

※The travel speed changes depending on the load.

Standard equipment

- Engine tachometer (with hour meter)
- Hydraulic pressure gauge
- Fuel gauge
- Engine coolant temperature gauge
- Front work lamp (on both sides)
- Operator's room lamp
- Front windshield wiper (with window washer)
- Ceiling wiper (with window washer)
- Sun shade
- Sun-visor
- Storage pouch
- Tool storage
- Reclining operator's seat
- Floor mat
- Steps for operator's cab
- Radio (AM/FM, Cassette)
- Cigarette lighter
- Ashtray
- Rear view mirrors (on both sides)
- Warning horn
- Moment limiter
- Electric fuel pump
- Slewing flashing light
- Slewing warning Buzzer (with voice alarm)
- Travel warning Buzzer (with voice alarm)
- A-frame hoist cylinder
- Bronze tinted glass
- Wire mesh boom walkway (for inner boom)
- Foot rest
- Electrical engine throttle control grip
- Engine throttle pedal
- Ultra low speed control
- Automatic hydraulic assist brake (main and aux.)
- Winch mode selector (main and aux.)
- Rope guide roller on boom back (for outer boom)
- Plug socket (24V)
- Loud speaker
- Winch speed control system (main, aux. and boom hoist)
- Pump power-shift system
- Switch of emergency stop (front and rear)
- Boom foot pin cylinder
- Standard tools for maintenance (details are as per Parts Catalogue)
- Remote controller for jack and crawler expand cylinder

Optional equipment

(1) Base Machine

- Jib drum
- Reeving winch
- Tagline
- Slewing parking break
- Constant speed slewing system
- Slewing mode select switch (free/break)
- Drum rotation indication
- Axle pin cylinder
- Monitor TV (for rear/drum view)
- Monitor TV (for hook load)
- Mirror for drum
- Radio transmitter
- Combustion type heater
- Fire extinguisher
- Room mirror
- Electric fan
- Spark arrester
- Operator gate lock lever
- Tool box (installed in front of operator cabin)
- Name plate (both side of base machine)
- Air conditioner

(2) Light and Instrument

- Airplane warning light
- Boom point clearance lamp
- Over load outside alarm light (red/yellow/green)
- Work light for drum
- Work light on boom
- Work light for rear direction
- Additional Front work light
- Hand light
- Lift/Depth meter
- Electric clinometer
- Level indicator
- Anemometer

(3) Step and guard

- Catwalk for rear cab
- Catwalk for rear cab (wide type with handrail)
- Handrail for catwalk
- Wire mesh for boom walkway (for insert boom and outer boom)
- Operator cabin roof guard
- Wire rope guard for insert boom
- Hook guard for outer boom (wood or steel pipe)
- Safety guard rope on main boom

(4) Others

- Large size tool box (with caster)
- Sling wire rope (for lifting counter weight or crawler)