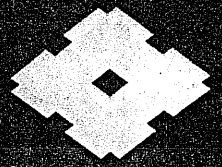


# SUMITOMO



PAX Series

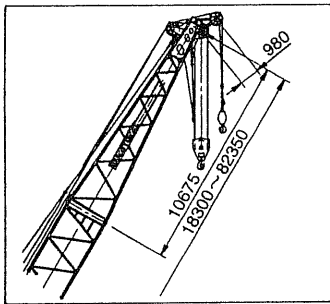
# SC 1500-2

## 150-M ton Hydraulic Crawler Crane

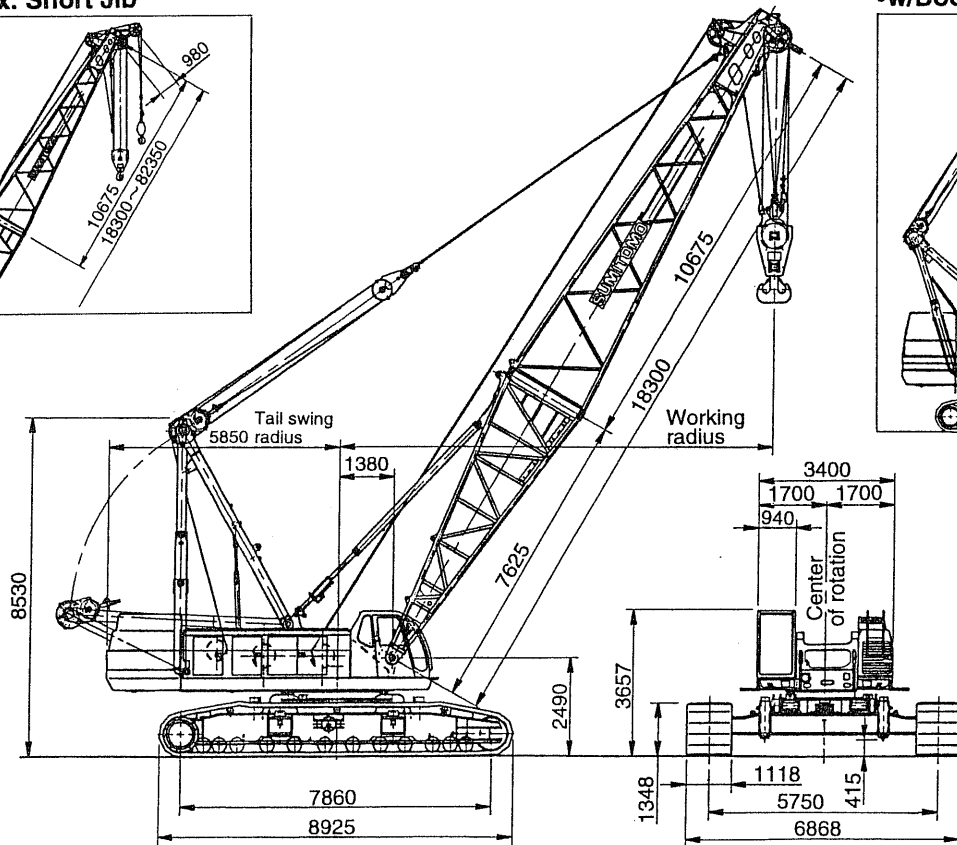
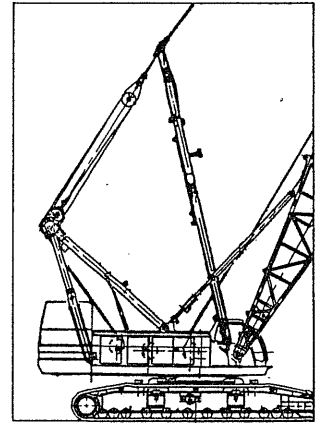
# Technical Data

### General Dimensions:

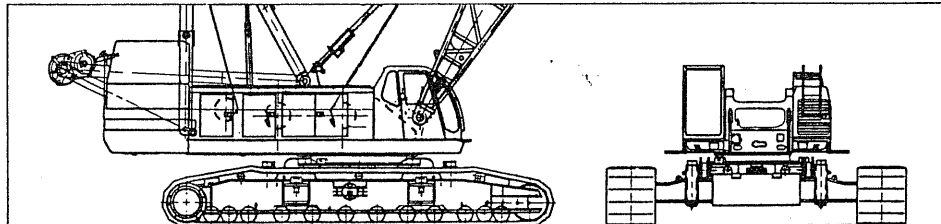
•w/Aux. Short Jib



•w/Boom Live Mast



•w/LWC Attachment



# SUMITOMO SC1500-2

## ■ w/Std. Counterweight - w/o Boom Live Mast

Boom length (m)	18.30	21.35	24.40	27.45	30.50	33.55	36.60	39.65	42.70	45.75	48.80	51.85	54.90	57.95	61.00	64.05	67.10
Working radius (m)																	
5.0	150.0																
5.5	148.0	140.6/5.6															
6.0	146.0	138.8	130.0/6.1														
6.5	144.1	135.9	130.0	122.6/6.6													
7.0	136.6	133.5	129.7	120.9	112.2/7.2	100.0/7.7											
8.0	112.6	112.5	112.5	112.5	109.3	100.0/8.6	90.0/8.2	88.9/8.7									
9.0	93.6	93.5	93.5	93.4	93.3	93.3	90.0	88.1	80.0/9.5	75.0/9.8							
10.0	80.0	79.8	79.8	79.7	79.5	79.6	79.6	79.4	79.4	75.0	70.8/10.3	66.1/10.9	61.9/11.4	57.9/11.9			
12.0	61.6	61.5	61.4	61.3	61.1	61.1	61.1	60.8	60.8	60.5	60.6	60.4	60.3	57.7	53.5/12.5	47.0/13.0	41.6/13.5
14.0	49.8	49.7	49.6	49.5	49.2	49.3	49.3	49.0	49.0	48.9	48.7	48.5	48.4	48.2	48.0	44.2	41.2
16.0	41.8	41.5	41.4	41.3	41.0	41.1	41.0	40.8	40.7	40.6	40.4	40.2	40.1	39.9	39.7	39.6	39.4
18.0	37.5/17.4	35.6	35.4	35.3	35.0	35.0	35.0	34.7	34.6	34.5	34.3	34.1	34.0	33.8	33.6	33.5	33.3
20.0		31.0	30.8	30.7	30.4	30.4	30.4	30.1	30.0	29.9	29.6	29.4	29.3	29.1	28.9	28.8	28.6
22.0			27.2	27.1	26.7	26.7	26.7	26.4	26.3	26.2	25.9	25.7	25.7	25.4	25.2	25.1	24.9
24.0			26.1/22.7	24.1	23.8	23.8	23.7	23.5	23.3	23.2	23.0	22.7	22.7	22.4	22.2	22.1	21.9
26.0				22.5/25.3	21.4	21.4	21.3	21.0	20.9	20.8	20.5	20.3	20.2	19.9	19.7	19.5	19.4
28.0					19.4	19.3	19.3	19.0	18.8	18.7	18.4	18.2	18.1	17.8	17.6	17.5	17.3
30.0						17.6	17.5	17.2	17.1	16.9	16.7	16.4	16.3	16.1	15.8	15.8	15.5
32.0						17.2/30.6	16.0	15.7	15.6	15.4	15.1	14.9	14.8	14.5	14.3	14.2	14.0
34.0							15.2/33.2	14.4	14.3	14.1	13.8	13.6	13.5	13.2	13.0	12.9	12.6
36.0								13.4/35.9	13.1	13.0	12.7	12.4	12.3	12.0	11.8	11.7	11.4
38.0									12.1	12.0	11.7	11.4	11.3	11.0	10.8	10.7	10.4
40.0									11.9/38.5	11.1	10.7	10.5	10.4	10.1	9.9	9.6	9.5
42.0										10.6/41.2	9.9	9.7	9.6	9.3	9.0	8.9	8.7
44.0											9.3/43.8	9.0	8.8	8.5	8.3	8.2	7.9
46.0												8.3	8.2	7.9	7.6	7.5	7.2
48.0												8.2/46.5	7.6	7.3	7.0	6.9	6.6
50.0													7.3/49.1	6.7	6.5	6.3	6.1
52.0														6.3/51.7	6.0	5.8	5.5
54.0															5.5	5.4	5.1
56.0															5.4/54.4	4.9	4.6
58.0																4.8/57.0	4.3
60.0																	3.8/59.7
62.0																	
64.0																	
66.0																	
No of part line	13	13	11	11	11	10	8	8	7	6	6	6	5	5	5	4	4

(ECP00146B/147B)

## ■ w/Std. Counterweight & LWC Att. - w/o Boom Live Mast

Boom length (m)	18.30	21.35	24.40	27.45	30.50	33.55	36.60	39.65	42.70	45.75	48.80	51.85	54.90	57.95	61.00	64.05	67.10
Working radius (m)																	
5.0	150.0																
5.5	148.0	140.6/5.6															
6.0	146.0	138.8	130.0/6.1														
6.5	144.1	135.9	130.0	122.6/6.6													
7.0	136.6	133.5	129.7	120.9	112.2/7.2	100.0/7.7											
8.0	112.6	112.5	112.5	112.5	109.3	100.0/8.6	90.0/8.2	88.9/8.7									
9.0	101.3	101.0	100.7	100.4	95.4	95.0	90.0	88.1	80.0/9.5	75.0/9.8							
10.0	90.7	89.7	88.7	88.4	88.2	88.2	88.0	82.0	79.4	75.0/10.7	70.8/10.3	66.1/10.9	61.9/11.4	57.9/11.9			
12.0	72.3	72.2	72.0	71.9	71.7	71.9	71.7	71.6	71.5	69.0	64.0	60.4	60.3	57.7	53.5/12.5	47.0/13.0	41.6/13.5
14.0	59.7	59.5	59.3	59.2	59.0	59.0	59.0	58.8	58.7	58.6	58.4	57.5	53.5	49.5	48.0	44.2	41.2
16.0	49.6	49.5	49.4	49.3	49.3	49.3	49.3	49.0	48.9	48.9	48.6	48.4	48.4	44.5	43.7	40.3	39.4
18.0	43.3/17.4	42.9	42.6	42.4	42.2	42.2	42.2	41.9	41.8	41.7	41.5	41.2	41.2	40.2	40.0	38.0	35.0
20.0		37.4	37.1	37.0	36.7	36.7	36.7	36.4	36.6	36.2	36.0	35.7	35.7	35.4	35.2	35.2	33.0
22.0			32.9	32.7	32.4	32.4	32.4	32.1	32.0	31.9	31.5	31.4	31.3	31.1	30.8	30.8	30.5
24.0			31.6/22.7	29.2	28.9	28.9	28.9	28.6	28.5	28.4	28.1	27.9	27.8	27.5	27.3	27.2	27.0
26.0				27.3/25.3	26.1	26.1	26.0	25.7	25.6	25.5	25.2	25.0	24.9	24.6	24.4	24.3	24.1
28.0					23.7	23.7	23.6	23.3	23.1	23.0	22.7	22.5	22.4	22.1	21.9	21.9	21.6
30.0						21.6	21.5	21.2	21.1	20.9	20.7	20.4	20.3	20.1	19.8	19.8	19.5
32.0						21.1/30.6	19.8	19.4	19.3	19.2	18.9	18.6	18.5	18.3	18.0	18.0	17.7
34.0							18.8/33.2	17.9	17.7	17.6	17.3	17.1	17.0	16.7	16.5	16.4	15.1
36.0								16.6/35.9	16.4	16.2	15.9	15.7	15.6	15.3	15.1	15.0	14.7
38.0									15.2	15.0	14.7	14.5	14.4	14.1	13.9	13.8	13.5
40.0									14.9/38.5	14.0	13.7	13.4	13.3	13.0	12.8	12.7	12.4
42.0										13.4/41.2	12.7	12.5	12.3	12.0	11.8	11.7	11.4
44.0											11.9/43.8	11.6	11.5	11.2	10.9	10.6	10.5
46.0												10.8	10.7	10.4	10.1	10.0	9.7
48.0												10.7/45.5	10.0	9.7	9.4	9.3	9.0
50.0													9.6/49.1	9.0	8.8	8.6	8.4
52.0														8.5/51.7	8.2	8.0	7.7
54.0															7.6	7.5	7.2
56.0															7.5/54.4	7.0	6.7
58.0																6.8/57.0	6.2
60.0																	5.2/59.7
62.0																	
64.0																	
66.0																	
No of part line	13	13	11	11	11	10	8	8	7	6	6	6	5	5	5	4	4

Note:

The LWC attachment can perform about 27% greater lifting crane capacity than that of standard counterweight throughout the most widely used working range under boom length from 18.30m through 85.40m by means of adding counterweights of 12.0ton for upper and 18.0ton for undercarriage onto standard unit with no other specification changes for crane boom and so on. Thus, the unit with LWC attachment can realize bigger lifting capacities as almost same as those of a 230ton class crawler crane.